

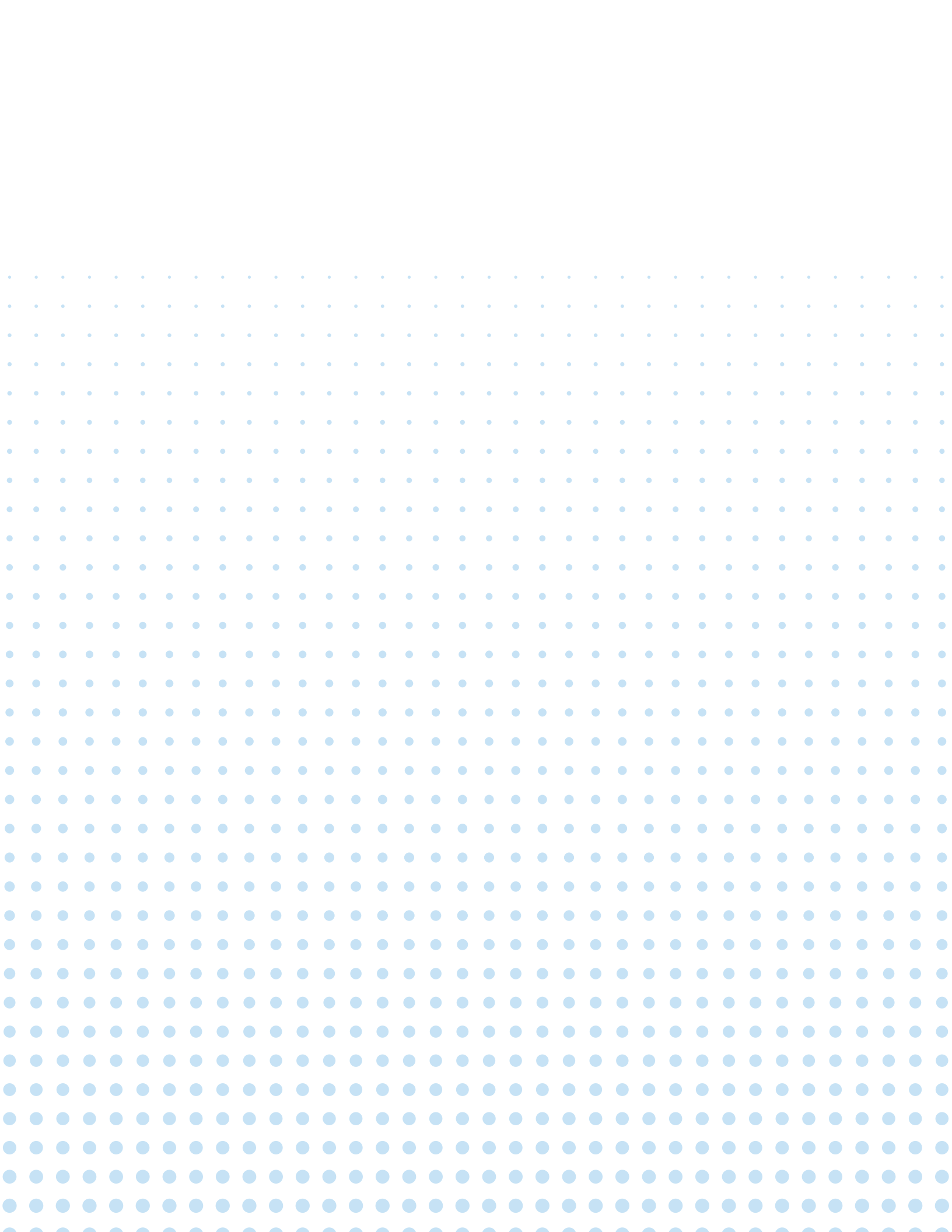


# Catalog of Services

February 2026



Bringing clarity & confidence to immune-related conditions with advanced functional testing.



# TABLE OF CONTENTS

About Cyrex Laboratories .....	1
Pillars of Excellence .....	2
Discover the Cyrex System .....	3

## Pathway™ Bundles

WheatComplete™ .....	4
WheatBarrier™ .....	4
Food Sensitivity Complete™ .....	4
Gut-Brain Barrier Health Screen™ .....	4

## Predict – Immune Evaluation & Autoimmune Risk

The Lymphocyte MAP™ – Comprehensive Lymphocyte Immunophenotyping.....	5
Array 5 – Multiple Autoimmune Reactivity Screen™ .....	5
Array 14 – Mucosal Immune Reactivity Screen™ .....	6
Total IgG/IgA/IgM (GAM) .....	6

## React – Gut Health & Food Reactivity

Array 2 – Intestinal Antigenic Permeability Screen™ .....	7
Array 22 – Irritable Bowel/SIBO Screen™ .....	7
WheatBurden™ (Formerly Array 3X) – Immune Reactivity to Wheat, Gluten, and Their Processed Protein Forms.....	7
Array 4 – Gluten-Associated Cross-Reactive Foods & Foods Sensitivity™ .....	8
Array 10 – Multiple Food Immune Reactivity Screen™ (180 food antigens tested).....	9
Array 10-90 – Multiple Food Immune Reactivity Screen™ (90 food antigens tested).....	10

## Detect – Toxic Triggers & Immune Stress

BiomeBurden™ Complete – Myco, Micro & Immune Evaluation .....	11
Micro-BiomeBurden™ – Candida Virulence Plus .....	11
Myco-BiomeBurden™ – Candida Virulence .....	12
Array 11 – Chemical Immune Reactivity Screen™ .....	12
Array 12 – Pathogen-Associated Immune Reactivity Screen™ .....	13

## Protect – Brain Function & Cognitive Health

Alzheimer's LINX™ – Alzheimer's-Associated Immune Reactivity .....	14
Array 7X – Neurological Autoimmune Reactivity Screen™ – Expanded .....	14
Array 20 – Blood-Brain Barrier Permeability™ .....	14

## Specimen Requirements

All Serum Tests.....	15
All Oral Fluid Test.....	15
All Whole Blood Test .....	15
All Mixed Specimen Test .....	15

## Create a HCP Account

Create a HCP account with Cyrex Laboratories.....	16
---	----

# ABOUT CYREX LABORATORIES

Cyrex Laboratories is a clinical lab specializing in immune function and environmentally triggered autoimmunity. We partner with healthcare providers to deliver clarity in complex cases—offering insight into patterns of immune dysfunction that can guide more personalized and proactive care.

Our testing is designed to support root-cause care by assessing immune reactivity to foods, chemicals, pathogens, and self-tissues, as well as the integrity of key immune barriers like the gut and blood-brain interface. This immune-first perspective helps practitioners connect symptoms to deeper dysfunction—often before traditional labs show a problem.

Cyrex's immune profiling technology, including flow cytometry tests like **The Lymphocyte MAP™**, offers a unique view of immune system balance at the cellular level. These insights help classify immune response patterns (immunotypes), assess immune fitness, and guide more personalized support strategies—especially in patients with immune dysregulation, persistent inflammation, or complex presentations.

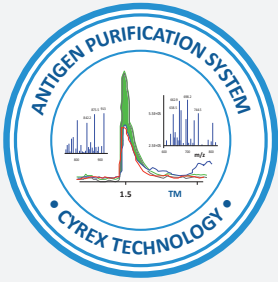
Since 2011, Cyrex has equipped integrative and functional providers with science-backed tools to better understand and support immune health. Our tests are easy to order, clinically relevant, and developed in collaboration with leading experts in immunology. Whether you're managing gut-brain dysfunction, autoimmunity, or unexplained chronic symptoms, Cyrex offers a valuable starting point for uncovering immune-related insights.





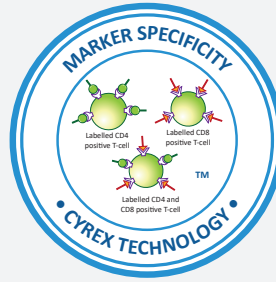
# PILLARS OF EXCELLENCE

## QUALITY BEHIND EVERY TEST



### Antigen Purification System™

Cyrex uses advanced proprietary extraction and purification techniques to ensure that it assesses reactivity to the un-adulterated antigen, resulting in greater specificity. This process is critical to attaining accurate results.



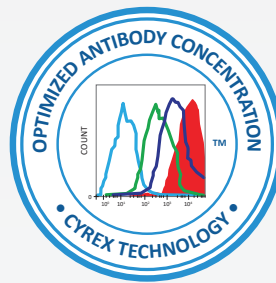
### Marker Specificity™

Cyrex uses advanced proprietary flow cytometry methods to precisely measure the properties of living cells. This results in precise identification and counts of various lymphocyte subpopulations.



### Optimized Antigen Concentration™

As foods contain different levels of protein, Cyrex technology uses proprietary protein concentrations for each antigen to ensure that optimum protein ratios are achieved to detect immune reactivity.



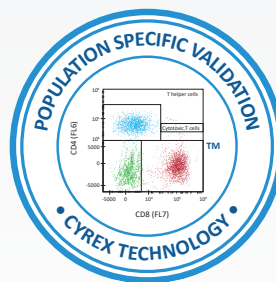
### Optimized Antibody Concentration™

As cellular expression of lymphocyte markers can vary, Cyrex optimizes the concentration of the fluorescent detection antibodies for each subpopulation to allow distinct identification of different populations.



### Antigen-Specific Validation™

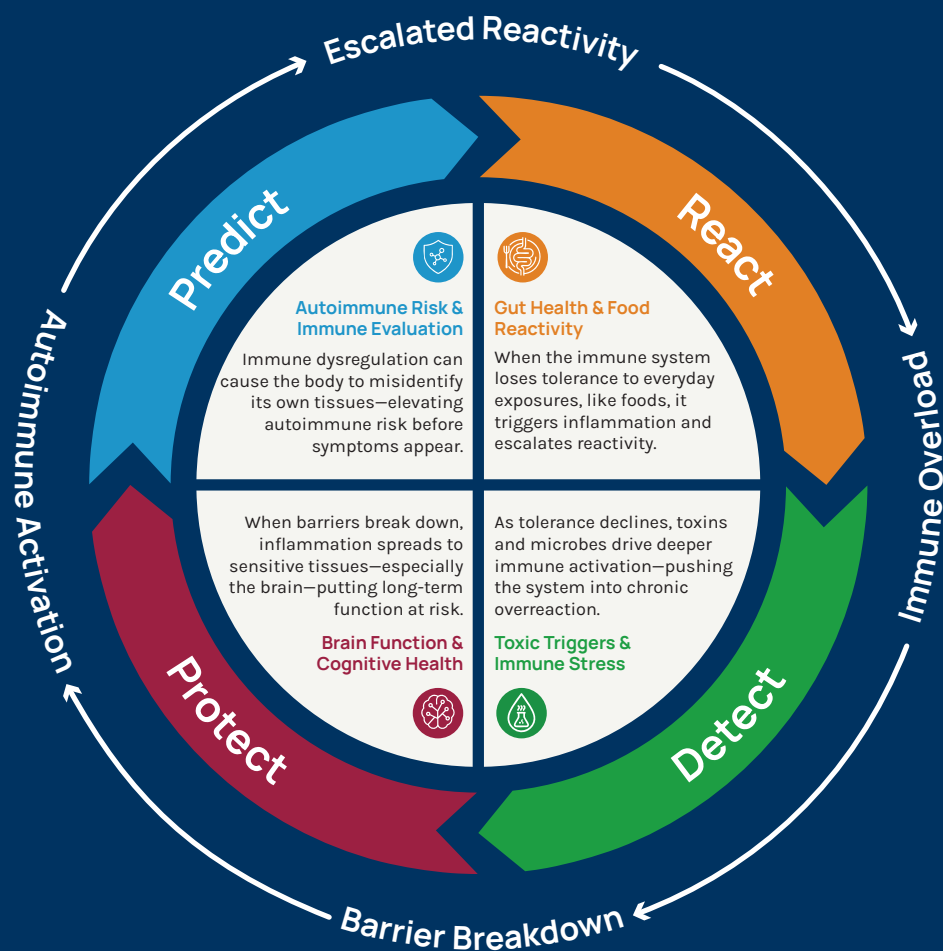
To improve accuracy, Cyrex validates each food antigen individually, rather than applying one arbitrarily chosen reference curve to an entire group of different foods.



### Population Specific Validation™

To achieve Cyrex quality, we validate each lymphocyte subpopulation individually. Unique reference ranges are applied to each subpopulation result.

# THE CYREX SYSTEM



## Immune Evaluation & Autoimmune Risk

- The Lymphocyte MAP™
- Array 5
- Array 14
- Total Serum (GAM)

## Gut Health & Food Reactivity

- Array 2
- WheatBurden™ (Formerly Array 3X)
- Array 4
- Array 10
- Array 10-90
- Array 22

## Toxic Triggers & Immune Stress

- BiomeBurden Complete™
- Micro-BiomeBurden™
- Myco-BiomeBurden™
- Array 11
- Array 12

## Brain Function & Cognitive Health

- Alzheimer's LINX™
- Array 7X
- Array 20

THE CYREX SYSTEM™ is an immunology-based approach that detects root causes and early events that are responsible for the development of inflammatory, autoimmune, neurodegenerative and other disorders.

It is a bi-directional testing system focusing on barrier breakdown, environmental triggers, predictive autoantibodies, neuroautoantibodies and lymphocyte subpopulations.

# Pathway™ Bundles



## WheatComplete™

GUT HEALTH & FOOD REACTIVITY

**Specimen Required: Serum**

A comprehensive wheat-centric immune assessment that integrates barrier integrity, gluten and non-gluten wheat proteins, toxic peptides, transglutaminase autoimmunity, and cross-reactive foods to map the full immune cascade surrounding wheat exposure.

### WheatComplete Pathway Tests

- **Array 2** – Intestinal Antigenic Permeability Screen™
- **WheatBurden™** (Formerly Array 3X) – Immune Reactivity to Wheat, Gluten, and Their Processed Protein Forms
- **Array 4** – Gluten-Associated Cross-Reactive Foods & Foods Sensitivity™

### WheatComplete + Lymphocyte MAP™ Pathway Tests

- **WheatComplete™ (Specimen Required Serum)**
- **Lymphocyte MAP™ (Specimen Required Whole Blood)**



## WheatBarrier™

GUT HEALTH & FOOD REACTIVITY

**Specimen Required: Serum**

A focused immune pathway that pairs intestinal barrier assessment with detailed wheat and gluten antigen reactivity, toxic peptides, and transglutaminase markers to clarify how permeability and immune activation interact in wheat-related inflammation.

### WheatBarrier™ Pathway Tests

- **Array 2** – Intestinal Antigenic Permeability Screen™
- **WheatBurden™** (Formerly Array 3X) – Immune Reactivity to Wheat, Gluten, and Their Processed Protein Forms



## Food Sensitivity Complete™

GUT HEALTH & FOOD REACTIVITY

**Specimen Required: Serum**

An advanced immune reactivity profile that combines wheat and gluten peptides, transglutaminase markers, cross-reactive antigens, and an extensive cooked and modified food panel to identify immune responses across the most clinically relevant dietary proteins.

### Food Sensitivity Complete™ Pathway Tests

- **WheatBurden™** (Formerly Array 3X) – Immune Reactivity to Wheat, Gluten, and Their Processed Protein Forms
- **Array 4** – Gluten-Associated Cross-Reactive Foods & Foods Sensitivity™
- **Array 10** – Multiple Food Immune Reactivity Screen™



## Gut-Brain Barrier Health Screen™

GUT HEALTH & FOOD REACTIVITY

BRAIN FUNCTION & COGNITIVE HEALTH

**Specimen Required: Serum**

A multidimensional immune barrier assessment that pairs intestinal permeability with blood-brain barrier integrity and microbial interaction markers to define the linked pathways of gut and neuroimmune barrier disruption and systemic inflammation.

### Gut-Brain Barrier Health Screen™ Pathway Tests

- **Array 2** – Intestinal Antigenic Permeability Screen™
- **Array 20** – Blood Brain Barrier Permeability Screen™
- **Array 22** – Irritable Bowel/SIBO Screen™

# Predict - Immune Evaluation & Autoimmune Risk



## The Lymphocyte MAP™ – Comprehensive Lymphocyte Immunophenotyping

### Specimen Required: Whole Blood

The Lymphocyte MAP™ is an innovative test which establishes a new standard in screening the immune system. It measures the integrity of the immune system at the cellular level to help identify a patient's immune status and immunotype(s), based on 35 determinations.

#### Determinations

- |   |  |  |
|---|--|--|
| <ul style="list-style-type: none"><li>• Total WBC</li><li>• Total Lymphocyte</li><li>• % Lymphocyte</li><li>• Total T Cell</li><li>• % T Cell</li><li>• Total B Cell</li><li>• % B Cell</li><li>• T Cell/B Cell Ratio</li><li>• Total T-Helper (CD4) Cell</li><li>• % T-Helper (CD4) Cell</li><li>• Total Cytotoxic (CD8) T Cell</li><li>• % Cytotoxic (CD8) T Cell</li><li>• CD4/CD8 Ratio</li></ul> | <ul style="list-style-type: none"><li>• Total T-Helper-1 Cell</li><li>• % T-Helper-1 Cell</li><li>• Total T-Helper-2 Cell</li><li>• % T-Helper-2 Cell</li><li>• TH1/TH2 Ratio</li><li>• Total T-Helper-17 (Th17)</li><li>• % T-Helper-17</li><li>• Total Regulatory T Cell (Treg)</li><li>• % Regulatory T Cell</li><li>• Th17/Treg Ratio</li><li>• Total NK Cell (CD56+)</li><li>• % NK Cell (CD56+)</li><li>• Total Cytotoxic NK cells (CD16+)</li></ul> | <ul style="list-style-type: none"><li>• % Cytotoxic NK cells (CD16+)</li><li>• Total NKT (CD56+ CD16+ T Cell)</li><li>• % NKT (CD56+ CD16+ T Cell)</li><li>• Total CD3- CD57+ Lymphocyte</li><li>• % CD3- CD57+ Lymphocyte</li><li>• Total CD57+ CD8+ T Cell</li><li>• % CD57+ CD8+ T Cell</li><li>• Total CD57+ CD16+ NK Cell</li><li>• % CD57+ CD16+ NK Cell</li></ul> |
|---|--|--|

*Available in US only.*



## Array 5 – Multiple Autoimmune Reactivity Screen™

### Specimen Required: Serum

Array 5 measures predictive autoantibodies, some of which can appear up to 10 years before clinical symptoms. Efficiently and economically assesses possible tissue damage to multiple organs of the body.

#### Antigens Tested (IgG)

- |   |  |
|---|--|
| <ul style="list-style-type: none"><li>• Thyroglobulin</li></ul> | <ul style="list-style-type: none"><li>• Thyroid Peroxidase (TPO)</li></ul> |
|---|--|

#### Antigens Tested (Autoantibody)

- |   |   |
|---|---|
| <ul style="list-style-type: none"><li>• Islet Cell Antigen (IA-2)</li></ul> | <ul style="list-style-type: none"><li>• Glutamic Acid Decarboxylase 65 (GAD 65)</li></ul> |
|---|---|

#### Antigens Tested (IgG + IgA combined)

- |  |  |  |
|--|--|--|
| <ul style="list-style-type: none"><li>• Parietal Cell + ATPase</li><li>• Intrinsic Factor</li><li>• ASCA + ANCA</li><li>• Tropomyosin</li><li>• 21 Hydroxylase (Adrenal Cortex)</li><li>• Myocardial Peptide</li><li>• Alpha-Myosin</li><li>• Phospholipid</li></ul> | <ul style="list-style-type: none"><li>• Platelet Glycoprotein</li><li>• Ovary/Testis*</li><li>• Fibulin</li><li>• Collagen Complex</li><li>• Arthritic Peptide</li><li>• Osteocyte</li><li>• Cytochrome P450 (Hepatocyte)</li><li>• Myelin Basic Protein</li></ul> | <ul style="list-style-type: none"><li>• Asialoganglioside</li><li>• Alpha + Beta Tubulin</li><li>• Cerebellar</li><li>• Synapsin</li></ul> |
|--|--|--|

*\* Ovary and Testis are tested together to avoid any confusion arising out of potential cross-reactivity.*



# Predict - Immune Evaluation & Autoimmune Risk



## Array 14 – Mucosal Immune Reactivity Screen™

**Specimen Required: Oral Fluid**

The mucosal immune system is the body's first line of defense against antigen invasion.

### Antigens Tested (IgA)

- Total                      Secretory

### Antigens Tested (IgA + IgM combined)

- |   |                              |                               |
|---|------------------------------|-------------------------------|
| • Lipopolysaccharides                         | • Gluteomorphin              | • Bisphenol-A                 |
| • Occludin/Zonulin                            | • Wheat Germ Agglutinin      | • Mercury                     |
| • Actomyosin                                  | • Transglutaminase-2         | • Mixed Heavy Metals          |
| • ASCA/ANCA                                   | • Egg                        | • Rotavirus                   |
| • Calprotectin                                | • Soy                        | • Myelin Basic Protein        |
| • Native + Deamidated<br>Alpha-Gliadin-33-mer | • Corn                       | • Blood-Brain Barrier Protein |
| • Gamma-Gliadin-15-mer                        | • Alpha-Casein + Beta-Casein | • Immune Complex              |
| • Glutenin-21-mer                             | • Casomorphin                |                               |
|   | • Aflatoxin                  |                               |

*Non-orderable for NDs in Ontario, Canada.*



## GAM - Total Serum IgG/IgA/IgM

**Specimen Required: Serum**

GAM assesses overall production of Immunoglobulin G, Immunoglobulin A and Immunoglobulin M in the body—an important measurement of general immunity. Total immunoglobulins testing can be a strong indicator of a disease or condition.

### Immunoglobulins Assessed

- Total IgG
- Total IgA
- Total IgM

# React – Gut Health & Food Reactivity



## Array 2 – Intestinal Antigenic Permeability Screen™

**Specimen Required: Serum**

Array 2 measures intestinal permeability to large molecules, which inflame the immune system. Identifies the route of damage to the intestinal barrier and the presence of immune reactivity to Lipopolysaccharides (LPS), a key indicator of systemic inflammation leading to autoimmune conditions.

### Antigens Tested

- Actomyosin - IgA
- Occludin/Zonulin - IgG
- Occludin/Zonulin - IgA
- Occludin/Zonulin - IgM
- Lipopolysaccharides (LPS) - IgG
- Lipopolysaccharides (LPS) - IgA
- Lipopolysaccharides (LPS) - IgM



## Array 22 – Irritable Bowel/SIBO Screen™

**Specimen Required: Serum**

Array 22 identifies the release of bacterial cytotoxins by the large intestinal bacteria that cause irritable bowels and/or SIBO and evaluates a breakdown of the intestinal barrier.

### Antigens Tested

- Bacterial Cytotoxins - IgG
- Bacterial Cytotoxins - IgA
- Bacterial Cytotoxins - IgM
- Cytoskeletal Proteins - IgG
- Cytoskeletal Proteins - IgA
- Cytoskeletal Proteins - IgM



## WheatBurden™ (Formerly Array 3X) – Immune Reactivity to Wheat, Gluten, and Their Processed Protein Forms

**Specimen Required: Serum**

WheatBurden™ assists in the identification of wheat reactivity, non-celiac gluten sensitivity, Celiac disease, food opioid reactivity, intestinal barrier damage and wheat-related autoimmunity.

### Antigens Tested (IgG and IgA tested separately for each antigen)

#### Full Wheat Kernel

- Wheat

#### Non-Gluten Wheat Proteins

- Wheat Germ Agglutinin
- Non-Gluten Proteins - A
- Non-Gluten Proteins - B

#### Gluten Family Peptides

- Gliadin Toxic Peptides
- Native + Deamidated Alpha-Gliadin-33-mer
- Alpha-Gliadin-17-mer

- Gamma-Gliadin-15-mer
- Omega-Gliadin-17-mer
- Glutenin-21-mer
- Gluteomorphin + Prodynorphin

#### Gliadin Transglutaminase

- Gliadin-Transglutaminase Complex

#### Transglutaminase

- Microbial Transglutaminase
- Transglutaminase-2
- Transglutaminase-3
- Transglutaminase-6

#### Cooked/Processed Wheat Products

- White Flour Dough
- Whole Wheat Bread (Yeast-Free)
- Sprouted Whole Wheat Bread
- Wheat Tortilla Bread (Yeast-Free)
- Italian Wheat Bread
- Italian Pasta (Cooked)



## Array 4 – Gluten-Associated Cross-Reactive Foods & Foods Sensitivity™

**Specimen Required: Serum**

Array 4 identifies reactivity to foods known to cross-react to gliadin and reactivity to newly introduced foods on a gluten-free diet.

**Antigens Tested (IgG + IgA combined)**

**Gluten-Containing/Gluten-Contaminated**

- Rye, Barley, Spelt, Polish Wheat
- Instant Coffee

**Gliadin Cross-Reactive Foods**

- Cow’s Milk
- Alpha-Casein + Beta-Casein
- Casomorphin
- Milk Butyrophilin
- Whey Protein
- Milk Chocolate

- Yeast
- Oats
- Millet
- Rice
- Corn

**Newly-Introduced and/or Over-Consumed on GFD**

- Buckwheat
- Sorghum
- Hemp
- Sesame

- Amaranth
- Quinoa
- Tapioca
- Teff
- Potato

**Common Antigenic Foods**

- Egg White & Egg Yolk, Raw
- Soy



## Array 10 – Multiple Food Immune Reactivity Screen™

### Specimen Required: Serum

This unique, revolutionary panel measures reactivity to 180 food antigens in the cooked, raw, modified or processed form on the same panel. Assists in early detection of dietary-related triggers of autoimmune reactivity and monitors the effectiveness of customized dietary protocols.

### 180 Antigens Tested (IgG + IgA combined)

#### Dairy and Eggs, Modified

- Egg White, cooked
- Egg Yolk, cooked
- Goat's Milk
- Soft Cheese + Hard Cheese
- Yogurt

#### Grains, Raw and Modified

- Rice, white + brown, cooked
- Rice Cake
- Rice Protein
- Rice Endochitinase
- Wild Rice, cooked
- Wheat + Alpha-Gliadins

#### Beans and Legumes, Modified

- Black Bean, cooked
- Bean Agglutinins
- Dark Chocolate + Cocoa
- Fava Bean, cooked
- Garbanzo Bean, cooked
- Kidney Bean, cooked
- Lentil, cooked
- Lentil Lectin
- Lima Bean, cooked
- Pinto Bean, cooked
- Soybean Agglutinin
- Soybean Oleosin + Aquaporin
- Soy Sauce, gluten-free
- Tofu

#### Nuts and Seeds, Raw and Modified

- Almond
- Almond, roasted
- Brazil Nut, raw + roasted
- Cashew
- Cashew, roasted
- Cashew Vicilin
- Chia Seed
- Flax Seed
- Hazelnut, raw + roasted
- Macadamia Nut, raw + roasted
- Mustard Seed
- Pecan, raw + roasted
- Peanut, roasted
- Peanut Butter
- Peanut Agglutinin
- Peanut Oleosin
- Pistachio, raw + roasted
- Pumpkin Seeds, roasted
- Sesame Albumin

- Sesame Oleosin
- Sunflower Seeds, roasted
- Walnut

#### Vegetables, Raw and Modified

- Artichoke, cooked
- Asparagus
- Asparagus, cooked
- Beet, cooked
- Bell Pepper
- Broccoli
- Broccoli, cooked
- Brussels Sprouts, cooked
- Cabbage, red + green
- Cabbage, red + green, cooked
- Canola Oleosin
- Carrot
- Carrot, cooked
- Cauliflower, cooked
- Celery
- Chili Pepper
- Corn + Aquaporin, cooked
- Popped Corn
- Corn Oleosin
- Cucumber, pickled
- Eggplant, cooked
- Garlic
- Garlic, cooked
- Green Bean, cooked
- Lettuce
- Mushroom, raw + cooked
- Okra, cooked
- Olive, green + black, pickled
- Onion + Scallion
- Onion + Scallion, cooked
- Pea, cooked
- Pea Protein
- Pea Lectin
- Potato, white, cooked (baked)
- Potato, white, cooked (fried)
- Pumpkin + Squash, cooked
- Radish
- Safflower + Sunflower Oleosin
- Seaweed
- Spinach + Aquaporin
- Tomato + Aquaporin
- Tomato Paste
- Yam + Sweet Potato, cooked
- Zucchini, cooked

#### Fruit, Raw and Modified

- Apple
- Apple Cider
- Apricot
- Avocado
- Banana
- Banana, cooked
- Latex Hevein
- Blueberry
- Cantaloupe + Honeydew Melon
- Cherry
- Coconut, meat + water
- Cranberry
- Date
- Fig
- Grape, red + green
- Red Wine
- White Wine
- Grapefruit
- Kiwi
- Lemon + Lime
- Mango
- Orange
- Orange Juice
- Papaya
- Peach + Nectarine
- Pear
- Pineapple
- Pineapple Bromelain
- Plum
- Pomegranate
- Strawberry
- Watermelon

#### Fish and Seafood, Raw and Modified

- Cod, cooked
- Halibut, cooked
- Mackerel, cooked
- Red Snapper, cooked
- Salmon
- Salmon, cooked
- Sardine + Anchovy, cooked
- Sea Bass, cooked
- Tilapia, cooked
- Trout, cooked
- Tuna
- Tuna, cooked
- Whitefish, cooked
- Crab + Lobster, cooked
- Imitation Crab, cooked
- Clam, cooked

- Oyster, cooked
- Scallops, cooked
- Squid (Calamari), cooked
- Shrimp, cooked
- Shrimp Tropomyosin
- Parvalbumin

#### Meat, Modified

- Beef, cooked medium
- Chicken, cooked
- Lamb, cooked
- Pork, cooked
- Turkey, cooked
- Gelatin
- Meat Glue

#### Herbs, Raw

- Basil
- Cilantro
- Cumin
- Dill
- Mint
- Oregano
- Parsley
- Rosemary
- Thyme

#### Spices, Raw

- Cinnamon
- Clove
- Ginger
- Nutmeg
- Paprika
- Turmeric (Curcumin)
- Vanilla

#### Gums

- Beta-Glucan
- Carrageenan
- Gum Guar
- Gum Tragacanth
- Locust Bean Gum
- Mastic Gum + Gum Arabic
- Xanthan Gum

#### Brewed Beverages and Additives

- Coffee Bean Protein, brewed
- Black Tea, brewed
- Green Tea, brewed
- Honey, raw + processed
- Food Coloring



## Array 10-90 – Multiple Food Immune Reactivity Screen™

### Specimen Required: Serum

Designed to give you the same unique, revolutionary features you get from Array 10. Array 10-90 measures reactivity to 90 food antigens most commonly consumed from our Array 10, in cooked, raw, modified or processed forms. The Array 10-90 also features all Cyrex's proprietary food testing technologies.

### 90 Antigens Tested (IgG + IgA combined)

#### Dairy and Eggs, Modified

- Egg White, cooked
- Egg Yolk, cooked
- Soft Cheese + Hard Cheese
- Yogurt

#### Grains, Raw and Modified

- Rice, white + brown, cooked
- Wild Rice, cooked
- Wheat + Alpha-Gliadins

#### Beans and Legumes, Modified

- Black Bean, cooked
- Bean Agglutinins
- Dark Chocolate + Cocoa
- Garbanzo Bean, cooked
- Kidney Bean, cooked
- Lentil, cooked
- Pinto Bean, cooked
- Soy Sauce, gluten-free
- Tofu

#### Nuts and Seeds, Raw and Modified

- Almond, roasted
- Cashew
- Flax Seed
- Mustard Seed
- Peanut, roasted
- Sesame Oleosin
- Sunflower Seeds, roasted
- Walnut

#### Vegetables, Raw and Modified

- Asparagus, cooked
- Beet, cooked
- Bell Pepper
- Broccoli
- Cabbage, red + green
- Canola Oleosin
- Carrot
- Cauliflower, cooked
- Celery
- Chili Pepper
- Popped Corn
- Eggplant, cooked
- Garlic
- Green Bean, cooked
- Lettuce

- Mushroom, raw + cooked
- Onion + Scallion
- Pea, cooked
- Potato, white, cooked (fried)
- Pumpkin + Squash, cooked
- Radish
- Spinach + Aquaporin
- Tomato Paste
- Yam + Sweet Potato, cooked
- Zucchini, cooked

#### Fruit, Raw and Modified

- Apple
- Avocado
- Banana
- Blueberry
- Cantaloupe + Honeydew Melon
- Coconut, meat + water
- Grape, red + green
- Lemon + Lime
- Orange
- Peach + Nectarine
- Pear
- Pineapple
- Strawberry
- Watermelon

#### Fish and Seafood, Raw and Modified

- Cod, cooked
- Salmon, cooked
- Tuna
- Tuna, cooked
- Whitefish, cooked
- Crab + Lobster, cooked
- Clam, cooked
- Shrimp, cooked
- Shrimp Tropomyosin

#### Meat, Modified

- Beef, cooked medium
- Chicken, cooked
- Pork, cooked
- Turkey, cooked
- Meat Glue

#### Herbs, Raw

- Basil
- Cilantro
- Oregano
- Parsley
- Rosemary

#### Spices, Raw

- Cinnamon
- Ginger
- Turmeric (Curcumin)
- Vanilla

#### Gums

- Carrageenan
- Xanthan Gum

#### Brewed Beverages and Additives

- Honey, raw + processed
- Food Coloring



# Detect – Toxic Triggers & Immune Stress



## BiomeBurden™ Complete – Myco, Micro & Immune Evaluation

**Specimen Required: Whole Blood + Serum**

BiomeBurden™ Complete is the first-of-its-kind test to combine microbial antigen reactivity with immune cell response analysis. It evaluates whether the immune system is reacting to microbial triggers—such as Candida, fungi, and pathogenic bacteria—and whether those reactions are regulated or inflammatory.

### Antigens Tested

- Candida Albicans Antigens\*
- Candida Tropicalis + C. Glabrata\*
- Candida Parapsilosis+Krusei\*
- Candida Auris\*
- Candidalysin\*
- Candida Germ Tube Protein\*
- Alpha-Enolase\*
- Saccharomyces Cerevisiae Glucan\*
- Saccharomyces Boulardii\*
- Food-derived Molds\*
- Aerobic Enteropathogens\*
- Anaerobic Enteropathogens\*
- Neutrophil Activation Factors\*
- Actin Peptide\*
- Ubiquitin\*

\*IgG and IgA tested separately.

Only Available in the U.S.

### Immune Evaluation (Flow Cytometry)

- WBC
- Total Lymphocyte
- Total T-Cell
- Th1
- Th2
- Th1/Th2 ratio
- Th17
- T-Reg
- Th17/T-Reg ratio



## Micro-BiomeBurden™ – Candida Virulence Plus

**Specimen Required: Serum**

Micro-BiomeBurden™ assesses immune reactivity to key microbial triggers including Candida species, food-derived molds, and gut-associated pathogens. This test helps identify hidden microbial burdens that may be contributing to chronic immune activation.

### Antigens Tested (IgG and IgA Antigens tested separately)

- Candida Albicans Antigens
- Candida Tropicalis + C. Glabrata
- Candida Parapsilosis+Kruse
- Candida Auris
- Candidalysin
- Candida Germ Tube Protein
- Alpha-Enolase
- Saccharomyces Cerevisiae Glucan
- Saccharomyces Boulardii
- Food-derived Molds
- Aerobic Enteropathogens
- Anaerobic Enteropathogens
- Neutrophil Activation Factors
- Actin Peptide
- Ubiquitin

# Detect – Toxic Triggers & Immune Stress



## Myco-BiomeBurden™ – Candida Virulence

**Specimen Required: Serum**

MycoBiomeBurden™ focuses on immune reactivity to Candida species and fungal virulence factors, offering insight into fungal tolerance loss and its potential impact on systemic inflammation.

### Antigens Tested (IgG and IgA Antigens tested separately)

- Candida Albicans Antigens
- Candida Tropicalis + C. Glabrata
- Candida Parapsilosis+Krusei
- Candida Auris
- Candidalysin
- Candida Germ Tube Protein
- Alpha-Enolase



## Array 11 – Chemical Immune Reactivity Screen™

**Specimen Required: Serum**

Toxic heavy metals and chemicals are all around us, in our environment and in our foods. Array 11 identifies body burden of chemicals bound to human tissues, which may lead to autoimmune reactivity.

### Antigens Tested (IgG + IgA combined, IgM tested separately for each antigen)

- Aflatoxins
- Formaldehyde + Glutaraldehyde
- Isocyanate
- Trimellitic + Phthalic Anhydrides
- Benzene Ring Compounds
- BPA Binding Protein
- Bisphenol A
- Tetrabromobisphenol A
- Tetrachloroethylene
- Parabens
- Mercury Compounds
- Mixed Heavy Metals (Nickel, Cobalt, Cadmium, Lead, Arsenic)

# Detect – Toxic Triggers & Immune Stress



## Array 12 – Pathogen-Associated Immune Reactivity Screen™

### Specimen Required: Serum

Array 12 detects immune reaction to key pathogens that may lead to multiple autoimmune reactivities. This test determines the role of pathogens in cases of 'unexplained' autoimmune reactivities and monitors the effectiveness of clinical protocols for addressing pathogens associated with multiple autoimmunities.

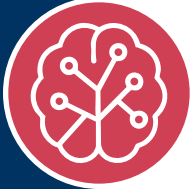
### Antigens Tested (IgG)

---

- Porphyromonas gingivalis
- Streptococcus mutans
- Helicobacter pylori
- Campylobacter jejuni
- Yersinia enterocolitica
- Clostridium difficile
- Candida albicans
- Rotavirus
- Entamoeba histolytica
- Giardia lamblia
- Cryptosporidium
- Blastocystis hominis
- Human HSP-60 + Chlamydia HSP-60
- Chlamydias
- Streptozymes
- Streptococcal M Protein
- Mycoplasmas
- Acinetobacter
- Klebsiella
- Mycobacterium avium
- Aspergillus
- Penicillium
- Stachybotrys chartarum
- Citrullinated EBV
- CYP450, mimic Hepatitis C Peptide
- Cytomegalovirus
- Human Herpesvirus-6
- Borrelia burgdorferi
- Babesia + Ehrlichia + Bartonella

*Detection of high levels of IgG antibody against the tested pathogens is not indicative of acute infection.*

# Protect - Brain Function & Cognitive Health



## Alzheimer's LINX™ – Alzheimer's-Associated Immune Reactivity

**Specimen Required: Serum**

Alzheimer's LINX™ makes it easier to identify the route of pathogenesis leading to cognitive decline and devise strategies to stop it. By addressing Blood-Brain Barrier breakdown, identifying and removing triggers and enhancing neuronal regeneration, one might be able to win the war on cognitive decline.

### Antigens Tested (IgG)

#### Brain Proteins

- Tau Protein
- Amyloid-Beta Peptide
- Rabaptin-5 + Presenilin
- Alpha-Synuclein

#### Growth Factors

- Beta Nerve Growth Factor
- Brain Derived Neurotrophic Factor
- Neurotrophins
- Somatotropin

#### Enteric Nerve, Enzymes and Neurological Peptides

- Enteric Nerve + Vasoactive Intestinal Peptide
- Transglutaminases

#### Pathogens

- Oral Pathogens
- Enterococcus faecalis
- Escherichia coli CDT + Salmonella CDT
- Campylobacter jejuni CDT
- Herpes Type-1

#### Chemicals

- Aluminums
- Dinitrophenyl
- Ethyl + Methyl Mercury
- Phthalates

#### Foods Cross-Reactive to Amyloid-Beta

- Egg Yolk, raw + cooked
- Lentil Lectin + Pea Lectin
- Tuna, canned
- Hazelnut Vicilin + Cashew Vicilin
- Scallops + Squid
- Caseins
- Alpha-Gliadin + Gliadin Toxic Peptide
- Non-Gluten Wheat Proteins

#### Blood-Brain Barrier And Neurofilaments

- Blood-Brain Barrier Protein + Claudin-5
- Aquaporins
- Neurofilament Proteins



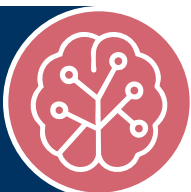
## Array 7X – Neurological Autoimmune Reactivity Screen™ – Expanded

**Specimen Required: Serum**

By including IgM, Array 7X helps with early detection of neuro-autoimmune reactivity, the identification of multi-focal motor neuropathy, lower motor neuron syndromes, earlier development of relapses in multiple sclerosis and chronic inflammatory demyelinating polyneuropathy, and as a tool to monitor the effectiveness of related treatment protocols.

### Antigens Tested (IgG + IgA combined, IgM tested separately for each antigen)

- Myelin Basic Protein
- Alpha + Beta Tubulin
- Synapsin
- Asialoganglioside
- Cerebellar



## Array 20 – Blood-Brain Barrier Permeability™

**Specimen Required: Serum**

Array 20 assists in the assessment of increased risk of neurodegenerative disorders, including but not limited to multiple sclerosis, Lou Gehrig's disease, senile dementia, Alzheimer's disease, Parkinson's disease, epilepsy and stroke. Helps in the early investigation of contact sports-related Traumatic Brain Injury, and evaluates the breach of the Blood-Brain Barrier caused by stress, trauma or environmental triggers, even in the absence of apparent concussion or brain injury.

### Antigens Tested

- Blood-Brain Barrier Protein - IgG + IgA
- Blood-Brain Barrier Protein - IgM

# Specimen Requirements

## SPECIMEN REQUIREMENT FOR ALL SERUM TESTS



Collect: 5 mL red top or tiger top

Transport: 2 mL serum

Only one collection required for all tests.

Multiple add-ons to existing orders will be accepted within 14 days of specimen receipt; after that time, specimens will be frozen and only one add-on request, which can consist of several arrays, can be processed between days 15-83. Specimens are stored for 90 days.



## SPECIMEN REQUIREMENT FOR MUCOSAL TESTS



Collect: 4 mL blue top

Transport: 4 mL saliva

Only one collection required for all tests.



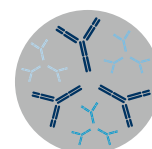
## SPECIMEN REQUIREMENT FOR WHOLE BLOOD TESTS NEVER REFRIGERATE OR FREEZE SPECIMEN



Collect and transport filled K2 EDTA tube.

Only one collection required for all tests.

Collect samples **Monday through Thursday** – must ship same day for Next Day Early Delivery.



## SPECIMEN REQUIREMENT FOR MIXED SPECIMEN TESTS NEVER REFRIGERATE OR FREEZE WHOLE BLOOD SPECIMEN

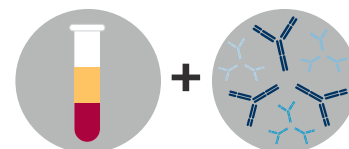


Collect: 5 mL red top or tiger top

Transport: 2 mL serum



Collect and transport filled K2 EDTA tube.



Collect samples **Monday through Thursday** – must ship same day for Next Day Early Delivery.

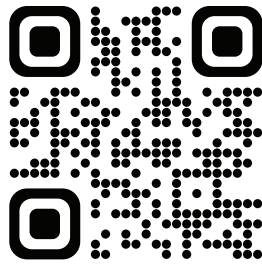


# Create an HCP Account with Cyrex Laboratories

## TO GET STARTED

Cyrex Laboratories works with licensed healthcare professionals throughout the United States.

To create an account scan the QR code or go to <https://www.cyrexlabs.com/join.aspx>.



**Become a Cyrex  
Partner Today!**



If you're already a Cyrex Labs account holder, log into your account to order or to download additional materials at <https://www.cyrexlabs.com>.

877-772-9739 • 602-759-1245



Phone: 877-772-9739 • 602-759-1245  
[www.JoinCyrex.com](http://www.JoinCyrex.com)