

# Cyrex Offers a Personalized and Innovative Approach to Evaluate and Monitor Your Health



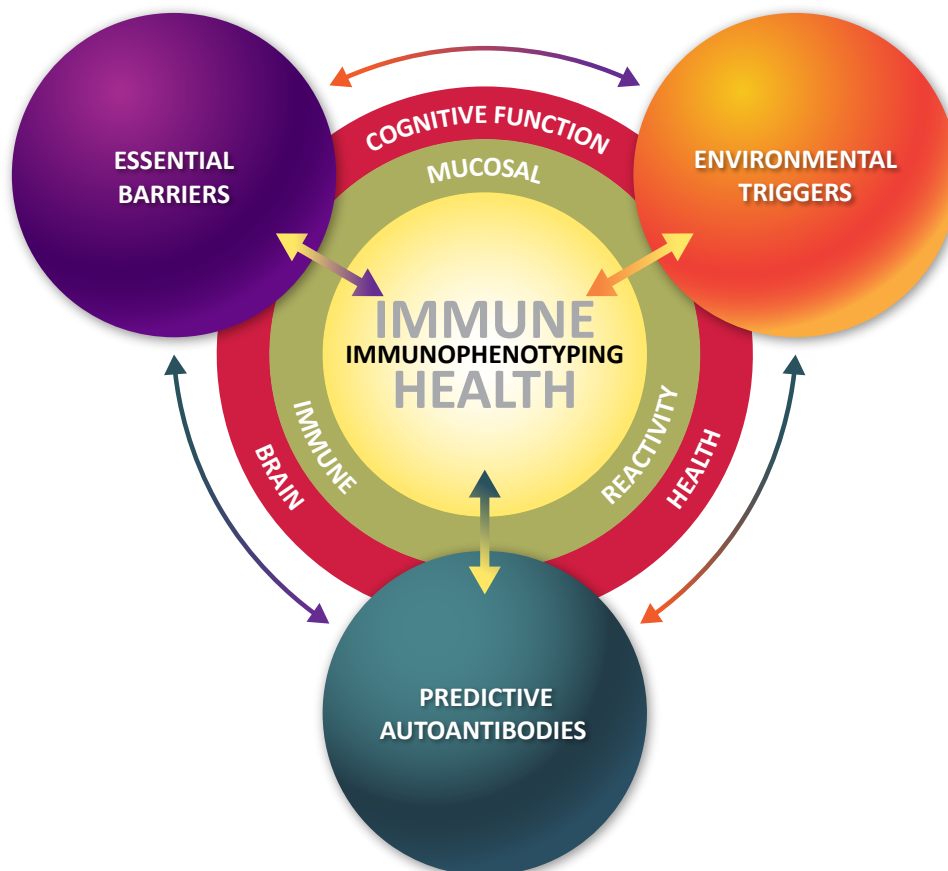
## AUTOIMMUNE DISORDERS: A GROWING CONCERN—CYREX CAN HELP

Cyrex is focused on the fast growing health issues of autoimmune disorders now affecting tens of millions of people in the United States. Cyrex test panels are designed to evaluate your immune reactions using our proprietary, advanced technology.

As a CLIA licensed clinical laboratory, our innovative tests provide your healthcare professional advanced clinical tools to identify and measure immune reactivity and possible autoimmune reactivity that can affect multiple tissues in your body such as:

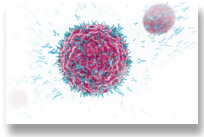
- Brain
- Nervous system
- Thyroid
- Heart
- Pancreas
- Reproductive Organs
- Liver
- Gastrointestinal System
- Bones
- Joints

## DISCOVER THE CYREX SYSTEM™



## IMMUNE HEALTH — WHOLE BLOOD TESTS

The most comprehensive immunophenotyping panel offered on the market, creating the broadest picture of immune status.



### The Lymphocyte MAP™ — Comprehensive Lymphocyte Immunophenotyping

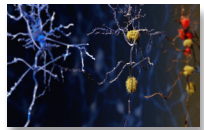
The Lymphocyte MAP™ measures the integrity of the immune system at the cellular level to help identify a patient's immune status and immunotype, based on 28 key biomarkers and determinants.

#### Recommended to verify:

- Immune system dysfunction
- Immunodeficiency
- Hyper-inflammation
- Autoimmunity
- Hypersensitivities induced by environmental trigger(s)

## BRAIN HEALTH - COGNITIVE FUNCTION — SERUM TESTS

Identify and address the early signs of Alzheimer's disease.



### Alzheimer's LINX™ — Alzheimer's-Associated Immune Reactivity

Alzheimer's LINX makes it easier to see the route of pathogenesis leading to cognitive decline, and devise strategies to stop it. By addressing Blood-Brain Barrier (BBB) breakdown, identifying and removing triggers and enhancing neuronal regeneration, one might be able to win the war on cognitive decline.

#### Recommended if you:

- Are interested in preventing the development of Alzheimer's disease or other neurological disorder.
- Are exhibiting early signs of Alzheimer's disease or other neurological disorder.
- Have been diagnosed with Alzheimer's disease.
- Have a history of gastrointestinal disorders and/or diabetes.
- Played high-impact sports.
- Are immunoreactive against specific pathogens, chemicals and foods.



**ALZHEIMER'S LINX™**  
ALZHEIMER'S-ASSOCIATED IMMUNE REACTIVITY

## BARRIER PERMEABILITY – SERUM TESTS

When there is a breach in essential defense barriers, the body is at risk for developing environmentally-induced autoimmunity.

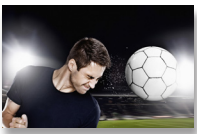


### Array 2 – Intestinal Antigenic Permeability Screen™

Measures intestinal permeability to large molecules, which inflame the immune system.

**Recommended if you:**

- Present multiple symptom complaints (including Chronic Fatigue Syndrome)
- Complain of food allergy and intolerance
- Suffer from abnormal immune cell count and function (including autoimmune diseases)



### Array 20 – Blood-Brain Barrier Permeability™

Assists in the assessment of increased risk of neurodegenerative disorders, including but not limited to Multiple Sclerosis, Lou Gehrig's Disease, Senile Dementia, Alzheimer's Disease, Parkinson's Disease, Epilepsy and Stroke. Helps in the early investigation of contact sports-related Traumatic Brain Injury (TBI), and evaluates the breach of Blood-Brain Barrier caused by stress, trauma or environmental triggers, even in the absence of apparent concussion or brain injury.

**Recommended if you:**

- Play contact sports during which repeated head trauma occurs
- Engage in activity that involves force or shock to the head and/or body
- Have intestinal permeability with abnormal elevation in LPS and/or Occludin/Zonulin antibodies
- Exhibit changes in cognitive function



### Array 22 – Irritable Bowel/SIBO Screen™

Identifies the overgrowth of large intestinal bacteria in the small intestine and the release of bacterial cytotoxin and evaluates a breach of intestinal barrier by cytotoxins and their entry into circulation.

**Recommended if you:**

- Have irritable bowels.
- Exhibit symptoms of malabsorption, including weight loss, anemia or fatty stools.
- Have associated conditions such as fatigue, reflux, skin disorders, obesity or food intolerances.



## ENVIRONMENTAL TRIGGERS — SERUM TESTS

Environmental triggers of autoimmunity include dietary proteins, chemicals and heavy metals and latent pathogens.



### Array 3X — Wheat/Gluten Proteome Reactivity and Autoimmunity™

An expanded panel of the Wheat/Gluten reactivity testing with the introduction of 4 new antigens. These antigens provide a more comprehensive look at addressing triggers for allergic disorders, Celiac Disease, Crohn's Disease, and neurological disorders.

#### Recommended if you:

- Have non-responsive GI symptoms.
- Present multiple symptom complaints (including Chronic Fatigue Syndrome and Fibromyalgia).
- Suffer from depression or neuro-autoimmunity.

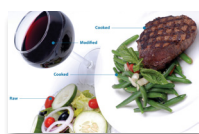


### Array 4 — Gluten-Associated Cross-Reactive Foods & Foods Sensitivity™

Identifies reactivity to foods known to cross-react to gluten and reactivity to newly introduced foods on a gluten-free diet to which you are sensitized.

#### Recommended if you:

- Have Non-Celiac Gluten Sensitivity or Celiac disease
- Are experiencing limited improvements or are non-responsive on a gluten-free diet
- Have gut dysbiosis, which appears to be resistant to standard therapy



### Array 10 — Multiple Food Immune Reactivity Screen™

This unique, revolutionary panel measures reactivity to 180 food antigens in the cooked, raw, modified or processed form on the same panel. Assists in early detection of dietary-related triggers of autoimmune reactivity and monitors the effectiveness of customized dietary protocols.

#### Recommended if you:

- Present with unexplained symptoms whether gastrointestinal, neurological, dermatological or behavioral in nature
- Are suspected of having increased intestinal permeability, which is the gateway for environmentally-induced autoimmune disorders



## ENVIRONMENTAL TRIGGERS — SERUM TESTS



### Array 10-90 — Multiple Food Immune Reactivity Screen™

Designed to give you the same unique, revolutionary features you get from Array 10 with two options that allow flexibility. Array 10-90 measures reactivity to 90 food antigens most commonly consumed from our Array 10, in cooked, raw, modified or processed forms. The Array 10-90 also features all Cyrex's proprietary food testing technologies.

Array 10-90X is available as an add-on test only to Array 10-90. It includes the remaining 90 food antigens from the Array 10.

#### Recommended if you:

- Present with unexplained symptoms whether gastrointestinal, neurological, dermatological or behavioral in nature
- Are suspected of having increased intestinal permeability, which is the gateway for environmentally-induced autoimmune disorders



### Array 11 — Chemical Immune Reactivity Screen™

Identifies the loss of immune intolerance associated with toxic chemical exposure, which may lead to autoimmune reactivity. Assists in setting guidelines for the avoidance of specific chemicals to reduce the risk of igniting the autoimmune process, and monitoring the effectiveness of the clinical management of protocols.

#### Recommended if you:

- Have increased chemical sensitivities/intolerances
- Have loss of immune tolerance and/or abnormal immune function



### Array 12 — Pathogen-Associated Immune Reactivity Screen™

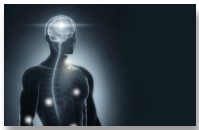
Detect immune reaction to key pathogens that may lead to multiple autoimmune reactivities.

#### Recommended if you:

- Present with chronic conditions such as gastrointestinal distress, fatigue, body aches or unexplained and general inflammation, including neuroinflammation.
- May have been exposed to bacteria, viruses, parasites, molds, and spirochetes associated with multiple autoimmunities.
- Have not fully responded to clinical interventions, such as detoxification and dietary modifications.

## PREDICTIVE ANTIBODIES — SERUM TESTS

Assessments your healthcare professional can use to identify autoimmune reactivity at its early stages.



### Array 5 — Multiple Autoimmune Reactivity Screen™

Measures predictive autoantibodies, some of which can appear up to 10 years before any clinical symptoms. Efficiently and economically assesses possible tissue damage to multiple organs of the body.

#### Recommended if you:

- Have a diagnosed autoimmune disorder, as there is a 25% chance of developing another condition
- Have chronic increased intestinal permeability, which is the gateway for environmentally-induced autoimmune disorders



### Array 7X — Neurological Autoimmune Reactivity Screen™ Expanded

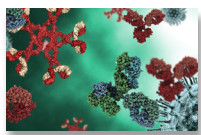
Helps in early detection of neuro-autoimmune reactivity in early detection of autoimmune reactivity of peripheral and central nervous system, and assists in monitoring the effectiveness of related treatment protocols.

#### Recommended if you:

- Have idiopathic neurological conditions such as Cerebellar ataxia or Peripheral Neuropathy
- Have Gluten-Reactivity, Dairy Sensitivity and/or enhanced permeability of the Gut and/or Blood-Brain Barrier

## TOTAL SERUM IMMUNOGLOBULINS – SERUM TESTS

Assesses total, accumulative immunoglobulin reactivity.



### GAM – Total Serum IgG/IgA/IgM

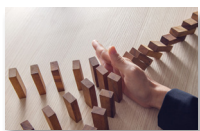
GAM assesses overall production of Immunoglobulin G, Immunoglobulin A and Immunoglobulin M in the body—an important measurement of general immunity. Total immunoglobulins testing can be a strong indicator of a disease or condition.

#### Recommended to verify:

- Current status of your immune system
- Antibody production

## MUCOSAL IMMUNE REACTIVITY – MUCOSAL TESTS

The mucosal immune system is the body's first line of defense against antigen invasion.



### Array 14 – Mucosal Immune Reactivity Screen™

Uniquely designed salivary assessment which measures antibodies to both SIgA and SIgM, and the first Cyrex array to encompass the Cyrex System.

The test contains:

- Markers of barrier integrity
- Immune reactions against environmental triggers
- Autoimmune reactivity

#### Recommended if you:

- Have chronic inflammatory bowel conditions.
- Have a family history of autoimmune disease.

*Non-orderable for NDs in Ontario, Canada.*



Talk to your Healthcare Professional today about Cyrex!





Phone: 877-772-9739 • 602-759-1245

[www.JoinCyrex.com](http://www.JoinCyrex.com)